

RECORDED IN OFFICIAL RECORDS  
RECORDED IN OFFICIAL RECORDS  
INSTRUMENT # 2000024982 5 PGS  
2009 MAR 02 04:00 PM  
KAREN E. RUSHING  
CLERK OF THE CIRCUIT COURT  
SARASOTA COUNTY, FLORIDA  
CBETHEL Receipt#1139582

200.544.00

Prepared by and return to:  
William M. Seider, Esquire/ca  
Williams, Parker, Harrison, Dietz & Getzen  
200 South Orange Avenue  
Sarasota, Florida 34236  
(941) 366-4800



CORRECTIVE FIFTH AMENDMENT  
TO DECLARATION OF CONDOMINIUM  
KENSINGTON PRESERVE OF ST. ANDREWS EAST AT THE PLANTATION

**THIS IS A CORRECTIVE INSTRUMENT TO THAT AMENDMENT RECORDED IN THE OFFICIAL RECORDS AS INSTRUMENT NO. 2007043469, PUBLIC RECORDS OF SARASOTA COUNTY, FLORIDA TO REFLECT THE CORRECT DEVELOPER OF KENSINGTON PRESERVE OF ST. ANDREWS EAST AT THE PLANTATION**

PURSUANT to Section 718.403, Florida Statutes, and the provisions of the Declaration of Condominium of Kensington Preserve of St. Andrews East at the Plantation as recorded in the Official Records at Instrument #2005244388, as amended, Public Records of Sarasota County, Florida, SAP PANTHER DEVELOPMENT, INC., a Florida corporation, as Developer of Kensington Preserve of St. Andrews East at the Plantation, hereby amends the survey and plot plan attached as Exhibit "A" to said Declaration of Condominium and recorded in Condominium Book 38, Page 23, of the Public Records of Sarasota County, Florida, in accordance with the Certificate of Surveyor attached hereto and by this reference made a part hereof.

IN WITNESS WHEREOF, Developer has caused this Amendment to be executed in its name this 19<sup>th</sup> day of February, 2009.

Witnesses:

SAP PANTHER DEVELOPMENT, INC.,  
a Florida corporation

Debbie L. Connelly  
Signature of Witness

Debbie L. Connelly  
Print Name of Witness

By: [Signature]  
STEPHEN E. LATTMANN,  
As its: President

[Signature]  
Signature of Witness

Richard W. Brady  
Print Name of Witness

STATE OF FLORIDA  
COUNTY OF SARASOTA

The foregoing instrument was acknowledged before me this 19<sup>th</sup> day of February, 2009 by Stephen E. Lattmann, as President of SAP PANTHER DEVELOPMENT, INC., a Florida corporation, on behalf of the corporation. The above-named person is personally known to me.

Debbie L. Connelly  
Notary Public

Print or type name of Notary Public

(Seal)



I am a Notary Public of the State of Florida and my commission expires on \_\_\_\_\_

# JRI Engineering, Inc.

Site Planning and Engineering    Surveying & Mapping    Aerial Photography and Photogrammetry Services

---

## CERTIFICATE OF SURVEYOR

I, the undersigned Registered Land Surveyor, hereby certify the following:

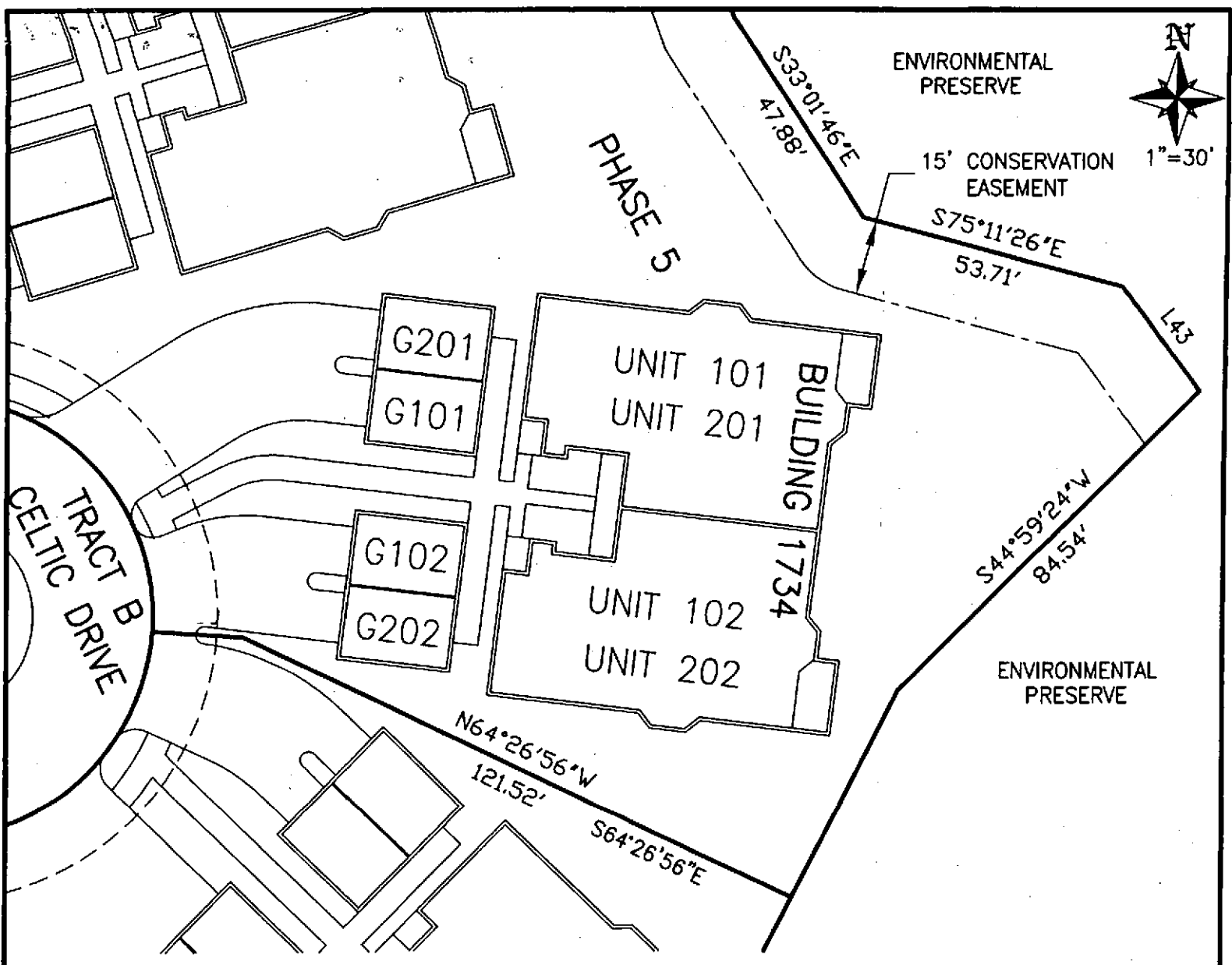
1. This certificate is made with respect to Building 1734, being Units 101, 102, 201 and 202 of Phase 5, Kensington Preserve of St. Andrews East; at the Plantation, a condominium shown on the Condominium plat recorded in Condominium Book 38, Pages 23 -23E, Public Records of Sarasota County, Florida.
2. The Construction of the improvements for said Units are substantially complete.
3. The plat, together with the provisions of the Declaration describing the Condominium Property, is an accurate representation of the location and dimensions of said Unit.
4. The identification, location and dimensions of the common elements and of each such Unit can be determined from the plat and the provisions of said Declaration.
5. All planned improvements, including, but not limited to, landscaping, utility services and access to said Units, and common element facilities, serving the building in which said Unit is located have been substantially completed.

JRI ENGINEERING, INC.  
LICENSED SURVEYOR BUSINESS NO. 6673

  
Date: 3/9/07  
Ronald Kerfoot  
Florida Surveyor Certificate No. 2994

JRI ENGINEERING, INC.  
2328 Hancock Bridge Parkway, Suite 114  
Cape Coral, Florida 33990  
Phone: 239-458-5544

SHEET 1 OF 4



1"=30'

**UNITS 101, 102, 201 AND 202**  
**BUILDING 1734, PHASE 5, "RECORD" FLOOR PLAN**  
**KENSINGTON PRESERVE OF ST. ANDREWS EAST AT THE PLANTATION**  
**A CONDOMINIUM**  
**SARASOTA COUNTY, FLORIDA**

**LEGEND**

- L.C.E. LIMITED COMMON ELEMENT
- G GARAGE
- COORD COORDINATE
- R RADIUS
- A ARC LENGTH
- Δ CENTRAL ANGLE
- C CHORD LENGTH
- CB CHORD BEARING
- R/W RIGHT OF WAY

JRI ENGINEERING, INC.  
 LICENSED SURVEYOR BUSINESS NO. 6673

*Ronald Kerfoot*  
 3/19/07

**RONALD KERFOOT**  
 FLORIDA REGISTERED LAND SURVEYOR NO. 2994

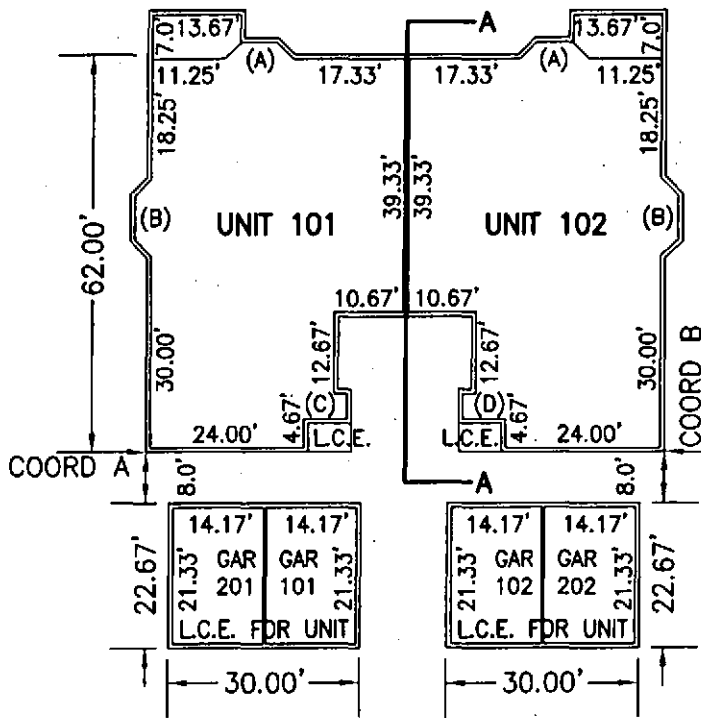
**JRI Engineering, Inc.**

Planning Engineering Surveying Aerial Photography & Photogrammetry Services

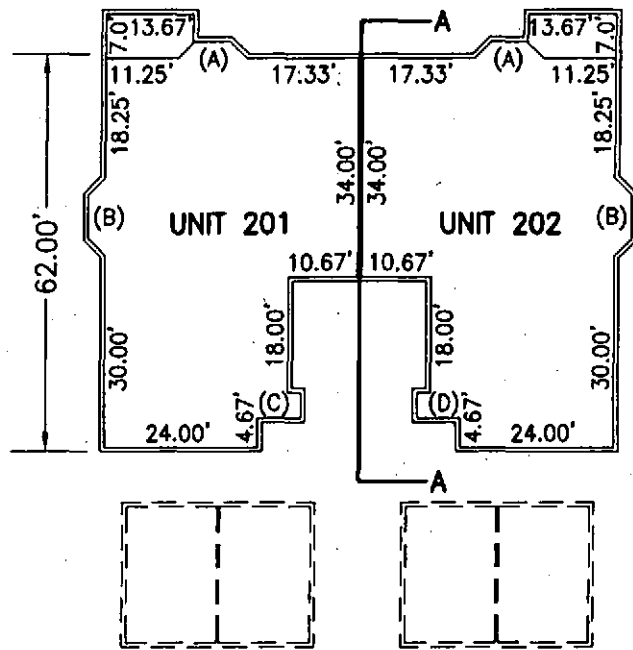
2328 Hancock Bridge Parkway, Suite. 114, Cape Coral, Florida 33990  
 Phone: 239.458.5544 Fax: 239.458.2233 www.jriengineeringinc.com  
 Surveying Business Certificate of Authorization No. 6673

COORD A:		COORD B	
NORTH	EAST	NORTH	EAST
17469.23	13396.48	17389.09	13386.82

NOTE: ALL UNIT DIMENSIONS SHOWN REFER TO INSIDE DIMENSIONS OF THE UNIT AND ARE SUBJECT TO SLIGHT VARIANCE WHICH MAY OCCUR DURING CONSTRUCTION.



FIRST FLOOR  
SCALE 1"=30'



SECOND FLOOR  
SCALE 1"=30'

UNITS 101, 102, 201 AND 202  
BUILDING 1734, PHASE 5, "RECORD" FLOOR PLAN  
KENSINGTON PRESERVE OF ST. ANDREWS EAST AT THE PLANTATION  
A CONDOMINIUM  
SARASOTA COUNTY, FLORIDA

**LEGEND**

- L.C.E. LIMITED COMMON ELEMENT
- GAR GARAGE
- COORD COORDINATE

JRI ENGINEERING, INC.  
LICENSED SURVEYOR BUSINESS NO. 6673

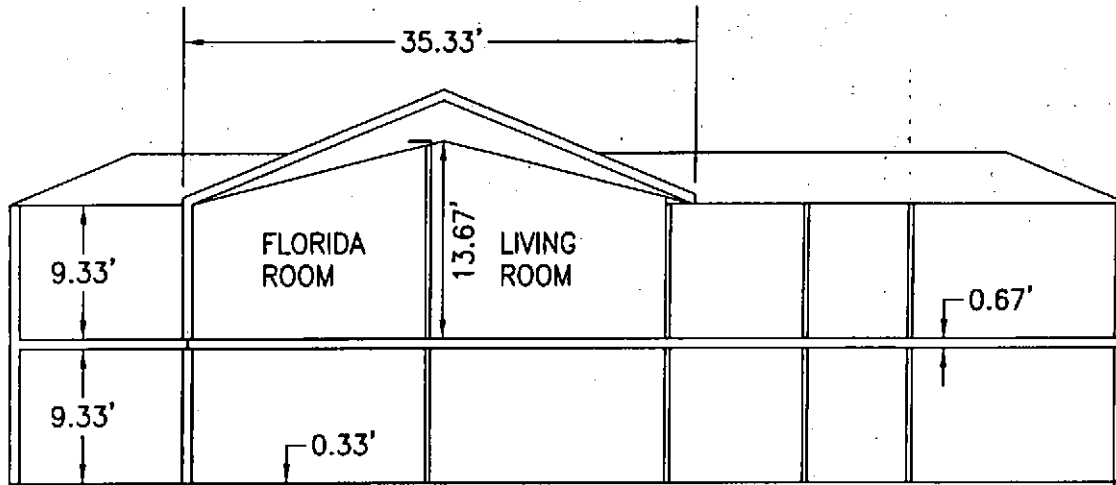
*[Signature]*  
3/19/07

RONALD KERFOOT  
FLORIDA REGISTERED LAND SURVEYOR NO. 2994

**JRI Engineering, Inc.**

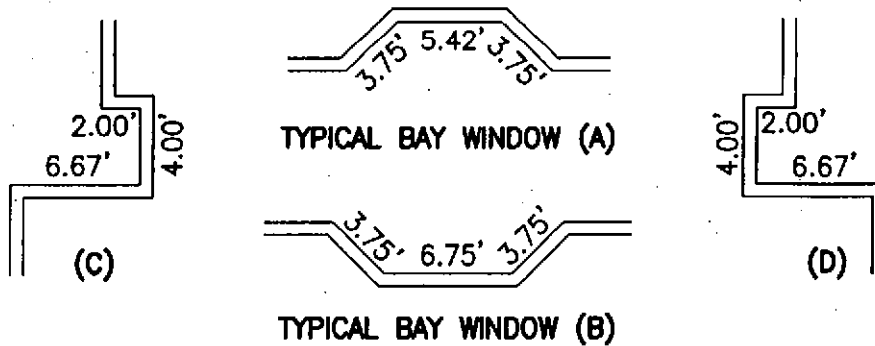
Planning Engineering Surveying Aerial Photography & Photogrammetry Services

2326 Hancock Bridge Parkway, Suite 114, Cape Coral, Florida 33990  
Phone: 239.458.5544 Fax: 239.458.2233 www.jriengineeringinc.com  
Surveying Business Certificate of Authorization No. 6673



FIRST AND SECOND FLOOR ELEVATION  
SECTION A-A  
N.T.S.

TYPICAL ELEVATIONS



UNITS 101, 102, 201 AND 202  
BUILDING 1734, PHASE 5, "RECORD" FLOOR PLAN  
KENSINGTON PRESERVE OF ST. ANDREWS EAST AT THE PLANTATION  
A CONDOMINIUM  
SARASOTA COUNTY, FLORIDA

**LEGEND**

L.C.E. LIMITED COMMON ELEMENT  
GAR GARAGE

JRI ENGINEERING, INC.  
LICENSED SURVEYOR BUSINESS NO. 6673

*[Signature]*  
RONALD KERFOOT  
FLORIDA REGISTERED LAND SURVEYOR NO. 2994

**JRI Engineering, Inc.**

Planning Engineering Surveying Aerial Photography & Photogrammetry Services

2328 Hancock Bridge Parkway, Suite. 114, Cape Coral, Florida 33990  
Phone: 239.458.5544 Fax: 239.458.2233 www.jriengineeringinc.com  
Surveying Business Certificate of Authorization No. 6673